



**Florida Photonics Cluster & Manufacturers Assoc. of Central Florida**  
**Joint Members Meeting**  
**September 25, 2014**

**Host & Location:**



**Lockheed Martin Missiles & Fire Control**  
**Visitor Center**  
**5600 Sandlake Rd**  
**Orlando, FL 32819**  
**407-356-4687/4691**

**Required arrival time: between 1:15pm and 1:45pm, cut-off on visitor security processing is at 2pm**

**Agenda – General Members Meeting**

Co-Chairs: Alex Fong, FPC President & Sherry Reeves, MACF Executive Director

2:30pm – Welcome & Introductions – FPC, MACF, and LMMFC

2:40pm – FPC and MACF business briefing

2:50pm – “DoD Institute for Manufacturing Innovation (IMI) Update”: Dr. Bahaa Saleh, Dean & Director, CREOL, The College of Optics and Photonics

3:10pm – “Overview of LMMFC”: Jeff Pridmore, VP of Technical Operations and Applied Research, LMMFC

3:30pm – “Affordability”: Reggie Grant, Director of Program Management, LMMFC

3:50pm – “Advanced Manufacturing”: Rick Hulcher, Dir. of Production Operations, LMMFC

4:10pm – Escorted relocation to tour location; divide into 2 groups

4:20pm – Dual Sessions: Tours of Fire Control Factory and Presentation and Video for Additive Manufacturing and Optical Components Center

**Group 1**

- 4:25pm Tour
- 5:05pm Presentation/Video

**Group 2**

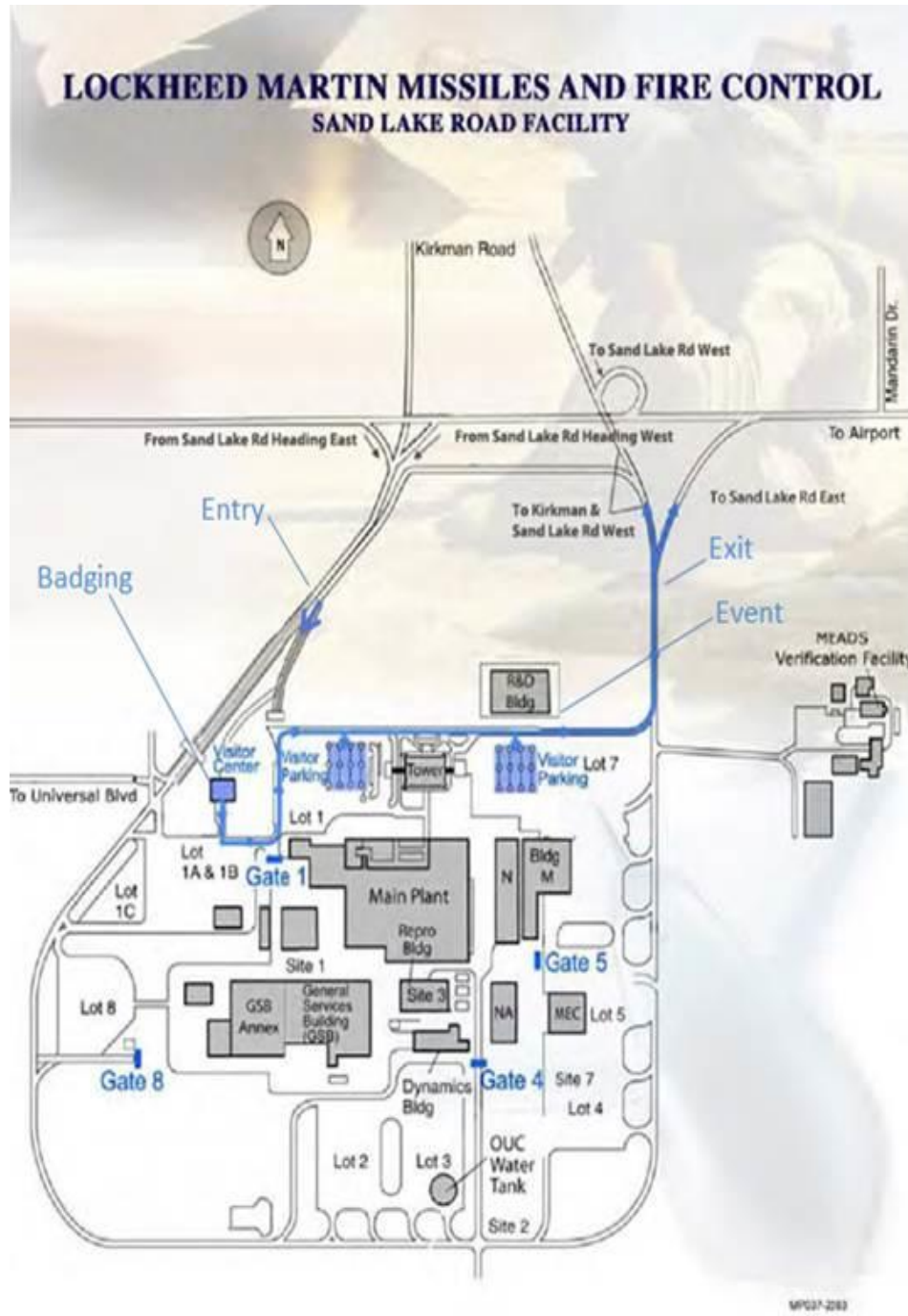
- 4:20pm Presentation/Video
- 5:00pm Tour

5:45pm -- Reception & networking; hosted by LMMFC

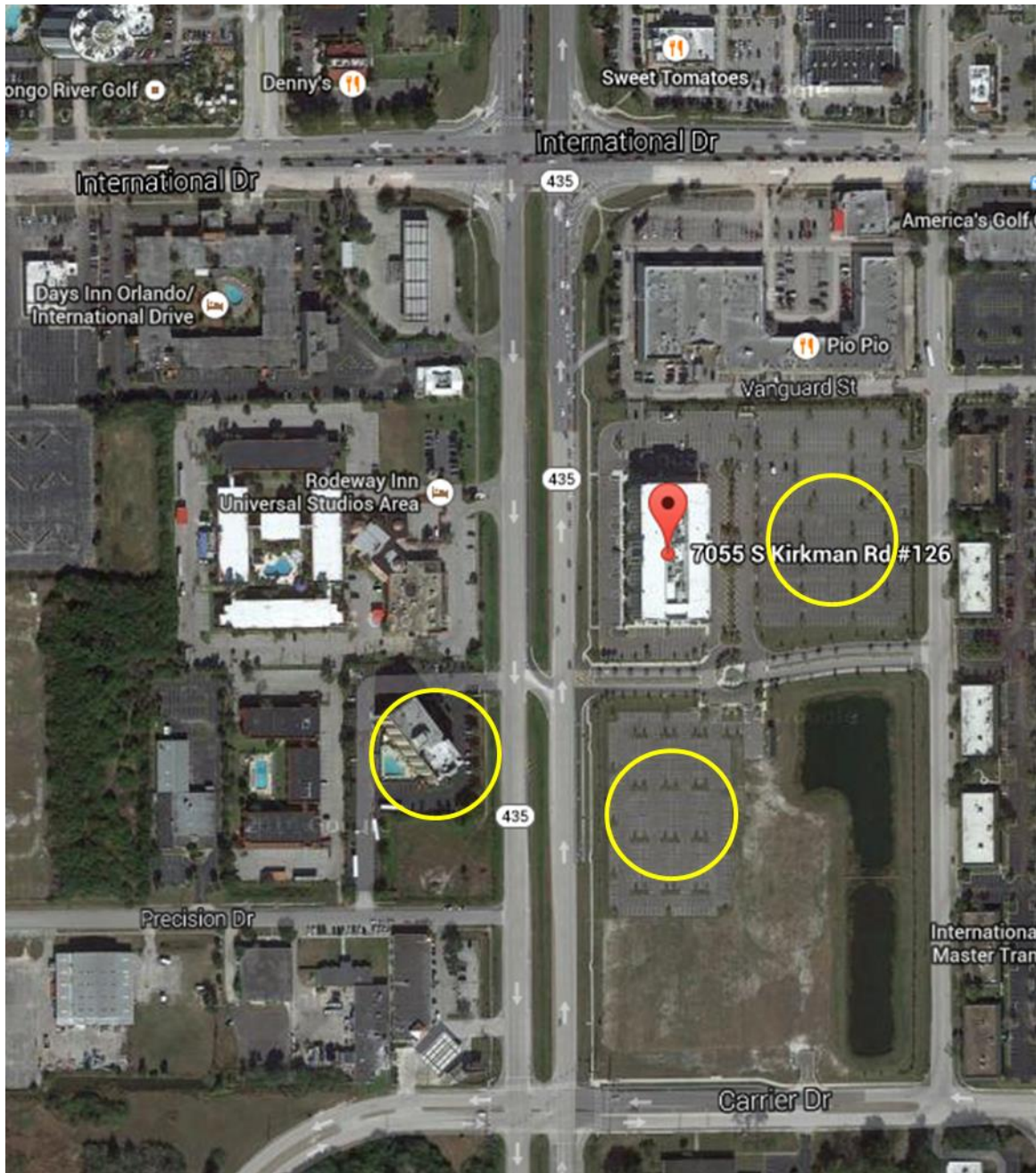
6:45pm -- Adjourn. Go to no-host dinner at local restaurant: Maggiano's, 9101 International Dr. Bldg #5, Ste #2400, Orlando, (407) 241-8650. [www.maggianos.com](http://www.maggianos.com)

Off-site Parking recommendation:

1. Pointe Orlando Parking Garage, 9101 International Dr, Orlando, (877) 717-0004 \$6 daily rate <http://orlandoparking.sppplus.com/Orlando-9101-International-Drive-Parking.html>  
For those going to the dinner after the meeting, Maggiano's uses this as "their garage" and will validate your parking ticket so there will be no cost to park.
2. Other locations that LMMFC has identified near their entrance (see map on next page). However, anyone parking in any of these locations must determine if parking is allowed and will be responsible for any problems that might occur (e.g., car towed, parking ticket).



Possible parking areas off-site near LMMFC entrance



To LMMFC Entrance